



JEUR0406G2 EPI ULTRA FAST SOFT RECOVERY RECTIFIER

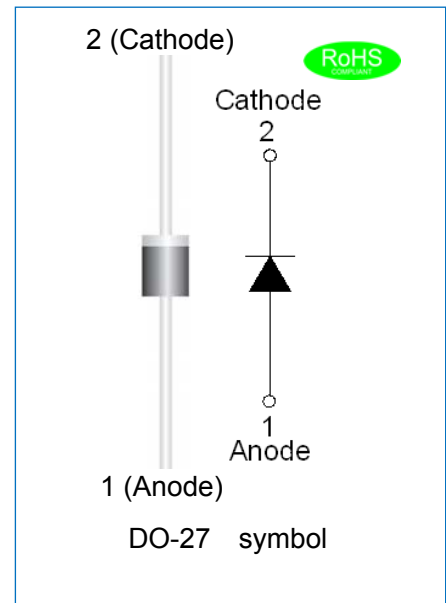
Rev.1.1

DESCRIPTION

- ✧ Plastic package has underwriters laboratory flammability classification 94V-0
- ✧ Lead free in comply with EU RoHS 2011/65/EU directives
- ✧ Low reverse leakage current
- ✧ Ultra Fast recovery time and soft recovery characteristics
- ✧ Low recovery loss
- ✧ Applications for use in switching power supplies, inverters and as free wheeling diodes

MECHANICAL DATA

- ✧ Case: DO-27 molded plastic
- ✧ Terminals: Solder plated, solderable per J-STD-002
- ✧ Polarity: Color band denotes cathode end



ABSOLUTE MAXIMUM RATING (Rating at 25°C case temperature unless otherwise specified.)

Parameter	Symbol	JEUR0406G2	Unit
Maximum repetitive peak reverse voltage	V_{RRM}	600	V
Maximum RMS voltage	V_{RMS}	420	V
Maximum DC blocking voltage	V_{DC}	600	V
Maximum average forward current@ $T_A=40^\circ\text{C}$	$I_{F(AV)}$	4	A
Peak forward surge current: 8.3ms single half sine-wave superimposed on rated load	I_{FSM}	110	A
Junction temperature and storage temperature range	T_j, T_{stg}	-55 to +175	°C

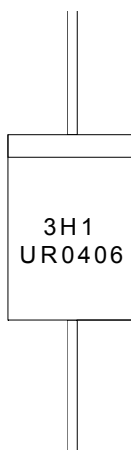
ELECTRICAL CHARACTERISTICS(Rating at 25°C case temperature unless otherwise specified.)

Parameter		Symbol	Min.	Typ.	Max.	Unit
Maximum forward voltage	$I_F=3A, T_j=150^\circ C$	V_F	-	-	1.05	V
	$I_F=3A, T_j=25^\circ C$		-	-	1.25	
	$I_F=4A, T_j=25^\circ C$		-	-	1.28	
Maximum DC reverse current at rated DC blocking voltage	$T_j=25^\circ C$	I_R	-	-	5	μA
	$T_j=150^\circ C$		-	-	200	
Maximum reverse recovery time	$I_F=0.5A, I_R=1A, I_{REC}=0.25A$	t_{rr}	-	-	50	ns
	$I_F=1A, di/dt=50A/\mu s$		-	-	75	
Peak reverse recovery current	$I_F=1A, di/dt=50A/\mu s$	I_{RM}	-	1.7	-	A

THERMAL RESISTANCES

Symbol	Parameter	Min.	Typ.	Max.	Unit
$R_{th(j-a)}$	Thermal resistance from junction to ambient free air	-	28	-	$^\circ C/W$

MARKING



UR	Ultra Fast Recovery Rectifier
04	$I_{F(AV)}=4A$
06	$V_{RRM}:600V$

$\underline{x}H1$: Month, 1、2、3 ~ 9、A、B、C

$3\underline{x}1$:

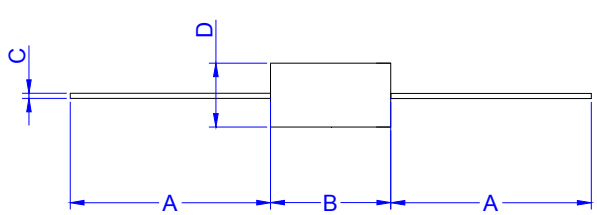
2018	2019	2020	2021	2022	2023	2024
H	I	J	K	L	M	N
2025	2026	2027	2028	2029	2030	...
O	P	Q	R	S	T	...

$3H\underline{x}$: Batch number

ORDERING INFORMATION

J	E	U	R	04	06	G2
JIEJIE Microelectronics	Epi	Ultra Fast	Rectifier	$I_{F(AV)}=4A$	$V_{RRM}:600V$	Package:DO-27

PACKAGE MECHANICAL DATA

 <p style="text-align: center;">DO-27</p>	Ref.	Dimensions			
		Millimeters		Inches	
		Min.	Max.	Min.	Max.
	A	25.40	-	1.000	-
	B	7.20	9.60	0.283	0.378
C	0.96	1.20	0.038	0.047	
D	4.80	5.40	0.189	0.213	

PACKAGE INFORMATION-DO-27

OUTLINE	UNIT WEIGHT (g/PCS) typ.	INNER BOX (PCS)	PER CARTON (PCS)
Bulk	1.142	1,000	10,000

CHARACTERISTICS CURVE

FIG.1: Typical forward characteristics

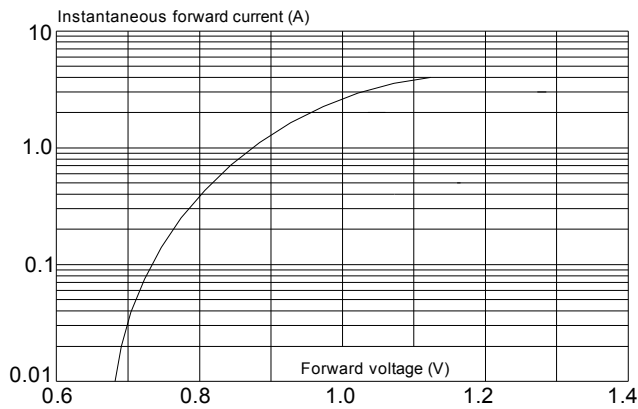


FIG.2: Typical reverse characteristics

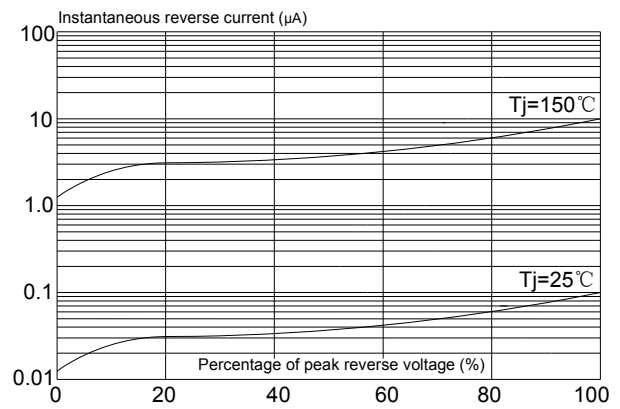


FIG.3: Maximum non-repetitive peak forward surge current

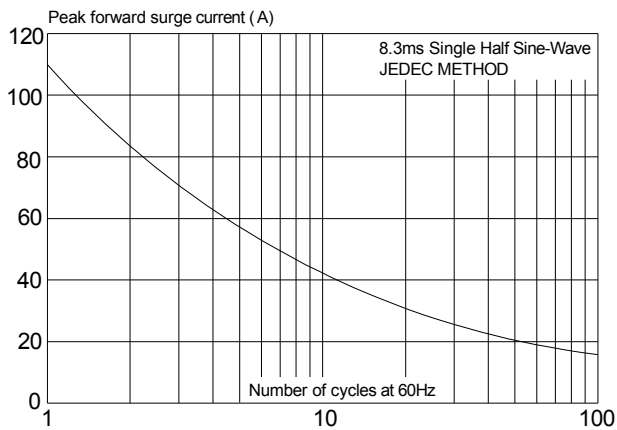


FIG.4: Forward current derating curve

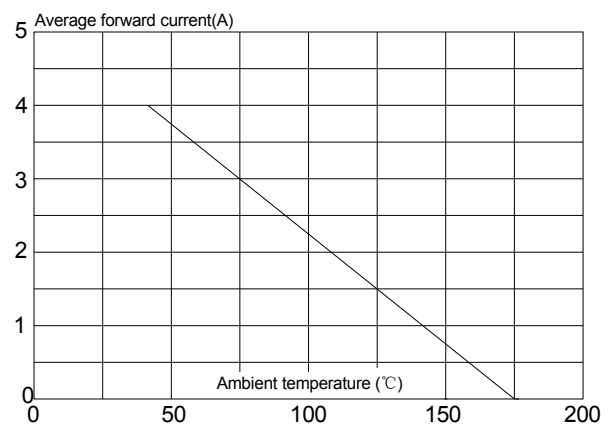


FIG.5: Power dissipation

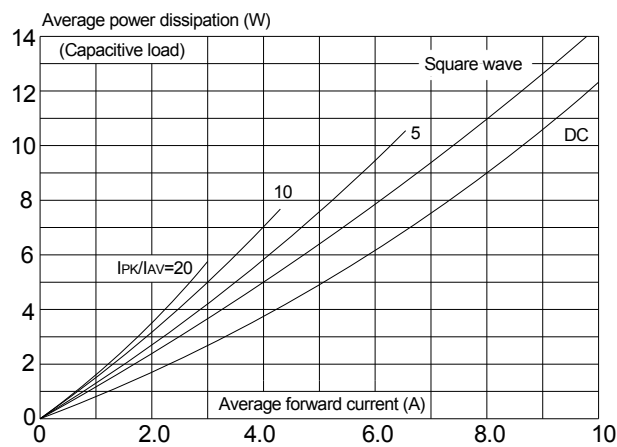
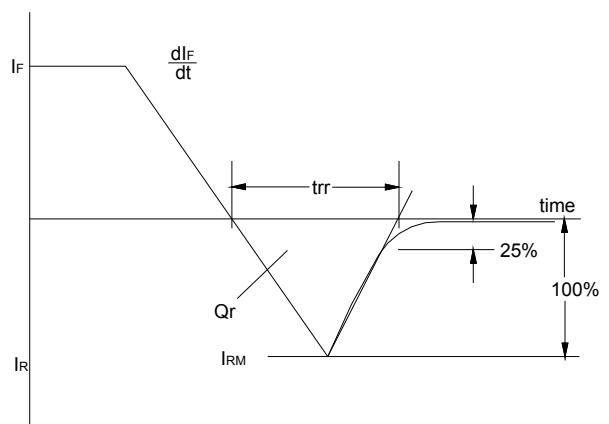


FIG.6: Reverse recovery definitions




Information furnished in this document is believed to be accurate and reliable. However, Jiangsu JieJie Microelectronics Co.,Ltd assumes no responsibility for the consequences of use without consideration for such information nor use beyond it.

Information mentioned in this document is subject to change without notice, apart from that when an agreement is signed, Jiangsu JieJie complies with the agreement.

Products and information provided in this document have no infringement of patents. Jiangsu JieJie assumes no responsibility for any infringement of other rights of third parties which may result from the use of such products and information.

This document is the 1.1st version which is made in 1-Feb.-2021. This document supersedes and replaces all information previously supplied.

 is a registered trademark of Jiangsu JieJie Microelectronics Co.,Ltd.

Copyright ©2021 Jiangsu JieJie Microelectronics Co.,Ltd. Printed All rights reserve.
